

# Welcome booklet







*Welcome to the Flowercamping du lac de la  
Seigneurie*

**We are very happy to welcome you in our family campsite in the  
heart of the forest.**

**We will strive to make your stay as pleasant as possible in a friendly  
way in our small corner of nature between Alsace and Franche-Comté.**

**This welcome booklet aims to give you as much information as  
possible, but we are of course at your disposal for any other  
questions.**

**Do not hesitate to ask us at the reception or contact us at  
(+33) 3 84 23 00 13.**

**Our advice: Download the application "Flowercamping" to not  
miss anything**

**Happy holidays to you and good stay with us,  
Most warmly,**

**Karine and Eric**



LE CAMPING  
c'est humain







# Inventory



- **Complete the EDL and rental inventory before noon the next day with the inventory sheet in the dwelling**

**Inform us of degraded objects**

- **Report any anomalies observed on receipt**

---

## dePARTure

- **EDL\* with team member on appointment**
  - **Delivery of keys and deposit**
  - **Possible cleaning service (75 €) plan for D-2 maximum**
- **any damage, breakage or loss will be invoiced or deducted from the deposit**

---

Despite all the care we take in the preparation of the rentals and the cleanliness, there can be some «misfires». In that case, please let us know within 24 hours.

**All accommodation is non-smoking.**

\*Edl = Inventory



# STATE OF PLAY

## **1/ ARRIVAL**

You carry out the inventory alone. You have an inventory sheet of the equipment made available in the accommodation.

**You have until noon the next day to declare any problem.**

## **2/DEPARTURE**

Make an appointment with the campsite between (8.00 and 10.00)

### **1/ If you have taken the cleaning package**

However, you are responsible for:

Clean and put away the dishes

Clean the table/microwave and the gas hob

Clean the fridge

Rinse the shower

Sweep the floors

Flip the chairs on the table

### **2/If you have not taken the cleaning fee**

You will have to do the cleaning in full

Floors washed, refrigerator disinfected and defrosted, windows cleaned, tables and work surfaces, microwave, hob cleaned, dishes, utensils and pots clean and tidy, cupboards cleaned and dusted, toilets cleaned, shower and washbasins cleaned (including drains ), bins emptied and cleaned

Put the chairs on the table

Terrace (if applicable): swept, furniture cleaned and put away

If renting linen, put it in a pile at the entrance to the rental.

**Failure to comply with the instructions will result in a deduction on deposit, as well as the loss or breakage of equipment.**





# Reception



**Except July/August:** Open every day from 9 am to 12 pm  
and from 2 pm to 7 pm (off season).

**In summer:** 9:00/12:00 - 14:00/20:00 (July and August  
only)

To contact us outside these hours  
dial the **(+33)3 84 23 00 13**



# Entry/Exit Barriers



**8am to 9pm (off season)**  
**8h00 to 22h30 (July/August)**



*Vehicle*

**IT IS STRICTLY FORBIDDEN to charge electric vehicles by plug-in in the rental or external electric terminal.**



**Limited speed of 10km/hour DEPENDING ON DIRECTION OF TRAFFIC**

**One vehicle per location.**



**After 21h00 or 22h30 (summer), the vehicle is left outside the campsite for the tranquility and rest of all.**

*Parking is available at the entrance of the campsite.*





# Visitors

## **If you wish to receive visitors**

*They must go to the reception of the campsite where they will be registered and they will have to pay a fee of 3€ per person from 3 years, and per animal.*

**The vehicle will be left in the parking lot of the entrance.**

**Access to the pool is not allowed.**

**Visitors must leave the campsite before closing.**

*A ticket will be given to them on arrival, it will be kept and presented at the request of the campsite management.*



**We thank you to respect the tranquility of the place and to avoid any nuisance that could hinder your neighbors.**



# *Free* **Wi-Fi** *Internet*

**Wifi (free)**

**Username:** camping seigneurie

**Password :** Seigneurie90110

**The wifi zone is ONLY limited to the bar/snack area (no wifi on the pitches)**





# Swimmingpool



**From 1 July to 15 September depending on weather conditions**

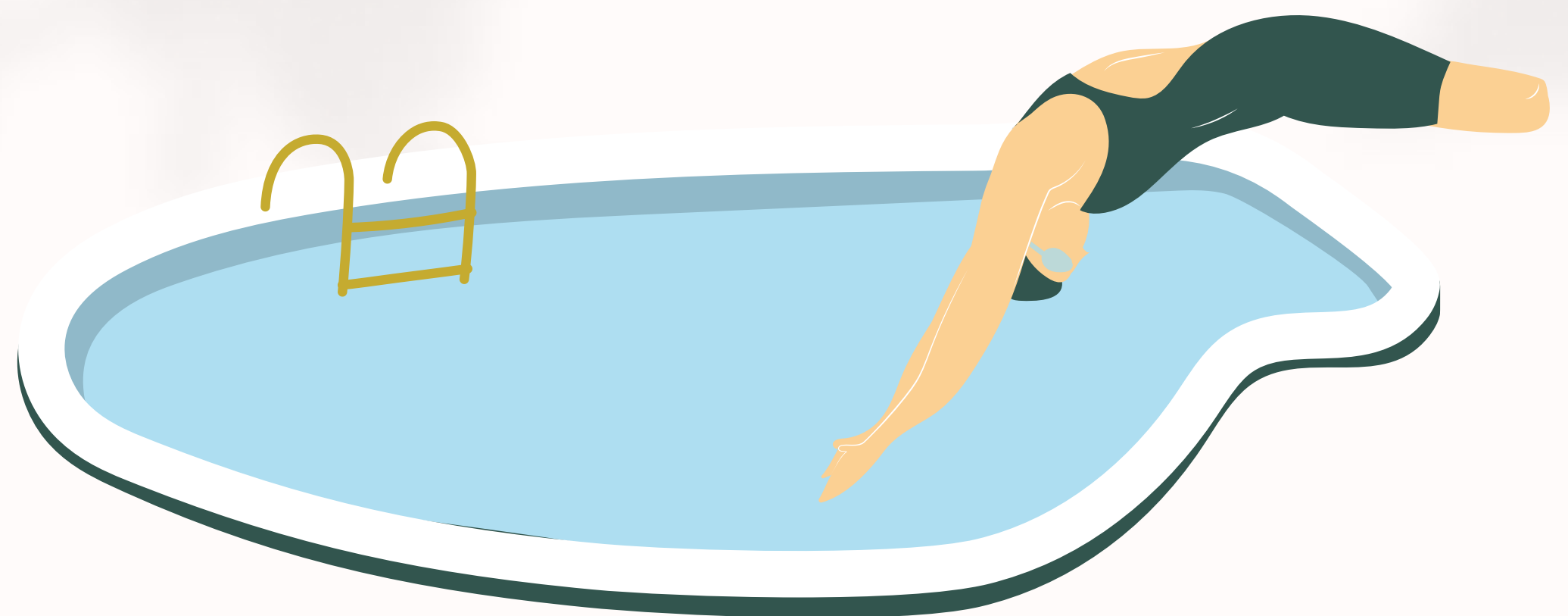
**Opening hours: 10 am to 8 pm**

**For hygienic reasons: Only swimwear, bathing brief. No bathing shorts.**

**The children will be under the supervision of an adult. All access to the pool is forbidden to them unaccompanied**

**Management declines all responsibility in case of accident  
Respect the rules of the pool.**

**FILLING OF INDIVIDUAL POOLS IS NOT PERMITTED**





# OUR ACTIONS FOR THE PLANET



## Bins and selective sorting

*At the entrance of the campsite*

### CONTAINERS "yellow" lid : PACKAGING

Jetez en vrac (pas de sac) :

Discard in bulk (no bag):

plastic packaging/paper/cartons/metal  
cans/cans/aerosols/trays

**A yellow bag is provided in the rental**

### CONTAINERS lid "bordeaux" : WASTE

in a CLOSED garbage bag: other household waste (food, coffee pods, paper towels, diapers, pizza boxes, etc.)



GLASS BOX: RIGHT EXIT OF  
THE CAMPSITE - 50 M

THE OTHER WASTE WILL BE  
TAKEN

### FIGHTING WASTE TOGETHER:

You still have some food items that are not expired, hygiene products or equipment that you cannot take back, leave them on the rental table or drop them off at the reception entrance in a dedicated bin.





# Your Eco-Responsible Gestures

**Turn off the radiator and/or air conditioning if a window or door is open.**



Overconsumption will result in bail  
BARBECUES, ELECTRIC FLOORBOARDS ARE PROHIBITED



**Turn off the light if it is not useful.  
Be sure to turn off the outside light.**



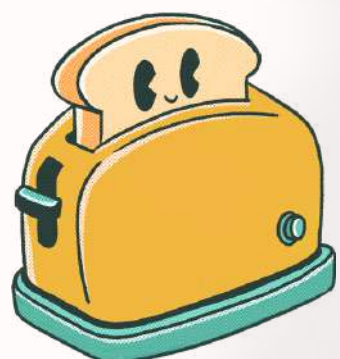
**Don't let the water run for no reason.**



**Do not abuse shower time**

**If you observe a leak of water, gas, an electrical problem, pollution on the site, notify management.**

**Turn off or disconnect electrical appliances**



## TOILETS



**The sanitation on the campsite operates independently (not everything to the sewer). Do not throw anything other than toilet paper in the toilet. The mobilhomes are equipped with sanibroyeurs. Throwing wipes/pads or towels can damage this equipment.**

Any damage caused by the failure to comply with these instructions will result in a charge commensurate with the damage observed.

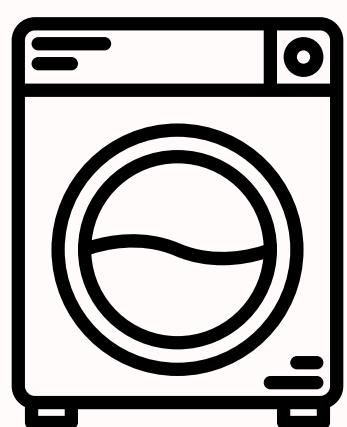
**PLEASE OBSERVE THESE INSTRUCTIONS STRICTLY**



# Services

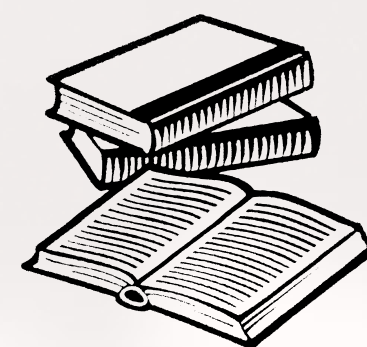


**Laundry and dryer: 5€ the token with laundry (purchase at the reception)**



**Loan of iron + table**

**Loan of hair dryer**



**Loan of games, books, rackets, petanque balls**

**Various rentals (baby equipment, bed and toilet linen, charcoal barbecue, etc.) – Inquire at reception**

**Small convenience store at reception**

**Post box: at the entrance of the campsite**



## **The shops nearby:**

**Supermarkets :**

**Leclerc and Drive Masevaux (5 km)**

**Aldi (4 km)**

**Commercial Zone Auchan Belfort Bessoncourt (16 km)**

**Commercial Zone Leclerc Cernay (23 km)**

**Distributeur de billets Masevaux (5 km)**

**petrol station Leclerc Masevaux (5 km)**

**Tabac press Masevaux (5 km)**

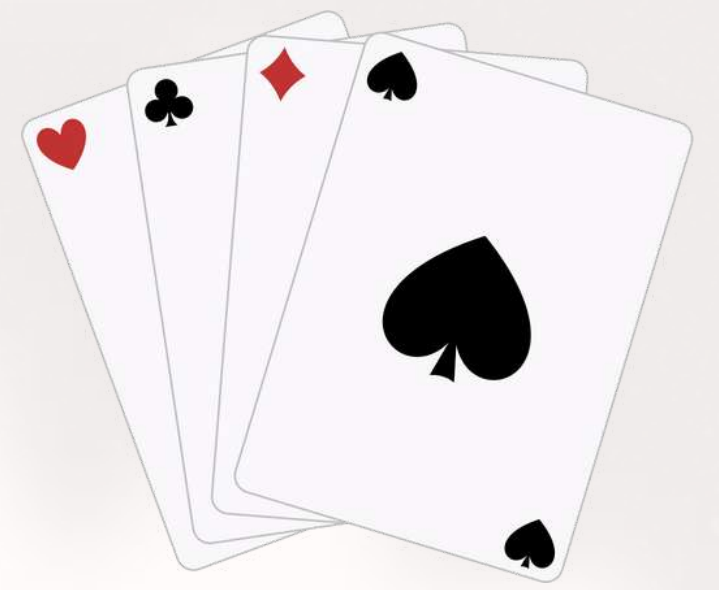
**Electric vehicle charging station : Rougemont le Château (3km)**

**Stations :Belfort (20 km)/Mulhouse (36 km)**





# activities and outings



**To visit the region and discover:**



**Belfort Tourisme (Franche-Comté side)**

<https://www.belfort-tourisme.com/>

**Masevaux Tourist Office (Alsace side)**

<https://www.cc-vallee-doller.fr/>

## Local Markets:



**Masevaux** : Wednesday morning (local producers) and every 2nd Thursday of the month at p. of 17h (farmers market)

**Etueffont** : Local market, 1st Sunday of the month

**Delle** : Saturday morning, market of the heart of town

**Belfort** : Market Fréry, Thursday and Friday, from 7am to 12pm and Saturday and Sunday from 7am to 1pm

**Giromagny** : saturday morning

**Thann** : saturday morning

**To relax, have fun or move :**

**In season, consult the panels dedicated to the reception and terrace of the bar. You will find our ideas for outings or activities and our animation program**



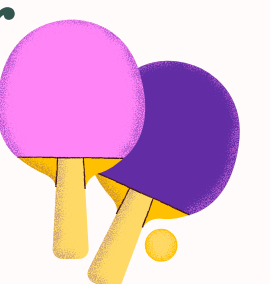
**or receive them via the "Flowercamping" app.**

**On the program: dance evening, pétanque tournament, wellness, hiking, walks etc...**

**The campsite also offers a fitness area, two playgrounds for children, a bowling alley, a table tennis table, a table football, darts etc...**



**The campsite offers a children's club (6-12) in summer**





## *Emergency*

### **EMERGENCY NUMBER :**

Direction of the campsite  
(outside reception opening hours) :

**(+33)3 84 23 00 13**

Police **17**

Firefighters **18**

Samu **15**

General : **112**



### **DOCTORS :**

**Medical office of the Doller (5 km), 1 avenue Gérard,  
03 89 82 80 00**

**doctor on duty : 116 117**

**PHARMACIES** Masevaux







# MENU



## snack - bar (licence4)

**open and services offered from May**

**Off season** : weekends and holidays  
(see timetables posted on site)

**July and August:** open every day (except Wednesday)  
from 16:00 to 22:00

### **Breakfast:**

(on reservation the day before 18:00)

**Out of season:** delivered to accommodation or terrace  
July and August: served on the terrace



**Sweet or salty (depending on offer):**

### Lunch/Dinner

On-site, take-out – delivered to site (off season)

**Season:** dinner only from 19:00

**and from 16:00 in season and w.end/holidays for an ice cream, a  
soft drink, cocktail ...**





## Bakery



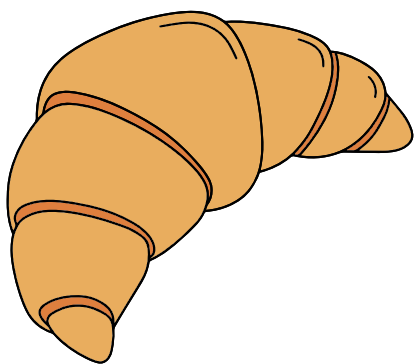
We offer bread/baguette and  
pastries at the snack



**Off season: weekends and  
holidays (p. May)**

**July and August: every day**

----



On order the day before  
18:00 at the reception or  
snack

Schedules may change depending on demand





# What to see or do

**Some examples:**

**COLMAR (3/4 h)**

**Alsace wine route (per thann  
at 1/2 h)**

**The Lion of Belfort and its  
citadel (at 1/4 h)**

**Mulhouse Automobile  
Museum (20 min)**

**Europapark (Rust at 1h)**





Have a good  
stay!

Have you noticed the little dinausore that accompanied you throughout the reading of this booklet? Do you want to meet him?