



Flowercamping du lac de la Seigneurie  
3 rue de la Seigneurie  
90110 Leval



# Welcome

*to the*  
Flower Camping at Lac de la Seigneurie

---

## A word from the team

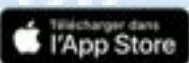
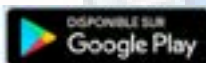
We are very happy to welcome you to our family-friendly and nature-filled campsite, located in the heart of the forest.

We are committed to making your stay as enjoyable as possible in a friendly atmosphere, in our little haven of fresh air between Alsace and Franche-Comté.

This booklet aims to provide you with as much information as possible to make your stay easier.

We are, of course, always available to answer any questions you may have.

Download the "flowercamping" app to keep up with our latest news.



Wishing you a wonderful vacation and a pleasant stay with us!

Warm regards,



*Karine, Eric,  
and their team*



# The team

---

**Eric**



Director

**Karine**



Director  
(female)

**Jean Jaques**



Our handyman

**Noah**



Our Landscaping  
intern

**Evelyne**



Our housekeeper

**Sami**



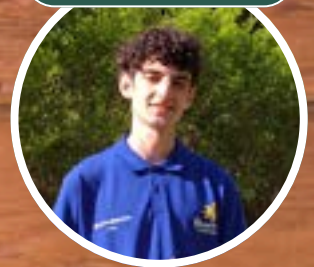
Our  
communications/entertain  
ment coordinator

**Hugo**



Our versatile  
receptionist

**Marius**



Our versatile  
receptionist



# Locate yourself at the campsite



# Life at the campsite

---

## Reception

- Outside of July and August: Open every day from 9:00 AM to 12:00 PM and from 2:00 PM to 7:00 PM
- In summer: 9:00 AM to 12:00 PM and 2:00 PM to 8:00 PM (in July and August)
- To contact us outside these hours, dial (+33)3 84 23 00 13 or 06 76 65 50 65 - only in cases of emergency

## Entry/exit barriers

Our barrier is open:

- from 8:00 a.m. to 9:00 p.m. (off season)
- from 7:30 a.m. to 10:30 p.m. (July/August)

## Vehicles



It is prohibited to recharge electric vehicles by plugging them in rentals or on the pitches' electrical terminals.

- A charging station is available next to reception (inquire at reception)
- Speed limited to 10 km/hour while respecting the DIRECTION OF TRAFFIC inside the campsite
- After 9:00 p.m. or 10:30 p.m. (summer), the vehicle is left outside the campsite for everyone's peace and quiet.
- One vehicle per location. Parking is available at the entrance to the campsite.



# Rules of Life

- For your comfort, all accommodations are non-smoking.
- Be respectful of the peace and quiet of your neighbors, do not make noise that could disturb them.

## Pets

- Must be kept on a leash in the campsite.
- No pets are allowed on the beds or sofas in the rentals.
- It is forbidden to leave your pet alone in the rental accommodations.

## Visitors

- If you have visitors, their registration is **MANDATORY** and will be done at the campsite reception upon their arrival.
- Entry authorization is conditional on payment of a fee of €3 (adult and child) against the provision of a "visitor" ticket.
- Visitors are required to leave the campsite before it closes.
- The car park at the entrance to the campsite is available for them to park their vehicle.
- Access to the swimming pool is prohibited.







Consider downloading the app

## FLOWERCAMPING

*to follow our news feed*

*Discover the summer entertainment schedule,*



## Pool

Our swimming pool is open from July 1 to September 15 depending on weather conditions, from 10:00 a.m. to 8:00 p.m.

- For hygiene reasons, the wearing of swimming shorts is not permitted. Only swimsuits and swim trunks are accepted.
- Children must be under adult supervision.
- The internal regulations of the swimming pool must be respected by everyone.

# Services offered

- ☐ Laundry or dryer: €5 per token - detergent €1 (purchase at reception)
- ☐ Iron + ironing board loan Hairdryer loan
- ☐ Loan of games, books, rackets, and petanque balls
- ☐ Various rentals available (baby equipment, bed linen and towels, charcoal barbecue...) - Inquire at the reception
- ☐ Small convenience store at the reception
- ☐ Outgoing mail mailbox: at the entrance of the campsite



# Services nearby

- For nearby shopping: Leclerc and Drive in Masevaux (5 km) or Aldi Masevaux (4 km)
- Tobacco and press shop in Masevaux (5 km)
- ATM in Masevaux (5 km)
- Gas station at Leclerc Masevaux (5 km)
- Auchan shopping area in Belfort Bessoncourt (16 km)
- Leclerc shopping area in Cernay (23 km)
- Electric vehicle charging station: at the campsite or in Rougemont Le Château (3 km)
- Train stations: Belfort (20 km)/Mulhouse (36 km)





# Inventory and arrival inventory

## Upon your arrival



- Please conduct the inventory and check the condition of the rental accommodation before noon the next day, using the inventory form provided in the accommodation or via the Flowercamping app.
- Please report any deficiencies, damages, cleanliness issues, or anomalies to the reception before noon the next day.

Despite our vigilance regarding the preparation and cleanliness of rentals, unforeseen events may arise. Please notify us within 24 hours.

---

## On the day of departure

- Drop the keys at the reception and inform if there are any issues (breakage, loss, etc...).
- In case of early departure: inform the reception and leave the keys on the interior door of the accommodation or on the table.
- In case of breakage, damage, or loss, the campsite is entitled to charge or deduct from the deposit as compensation.



Each accommodation must be returned in the condition in which you would like to find it upon your arrival. Please ensure its maintenance. We provide a cleaning kit in all accommodations.

# Departure Formalities

## 1/ You have purchased an end-of-stay cleaning service:

Thank you nonetheless for cleaning and tidying up the dishes, the table, the microwave, the gas stove, emptying the refrigerator, the trash can - Rinsing the shower - Returning the chairs to the table.

## 2/ You did not opt for the cleaning package.

Thank you in this case for cleaning thoroughly:

- Washing the floors, disinfecting and defrosting the refrigerator, cleaning the main window, tables and countertops, microwave, cooking hob, dishes, utensils, and pots cleaned and stored.
- Cleaned and dusted cupboards, toilet, shower, and sinks cleaned (including drains), emptied and cleaned trash cans. Putting the chairs on the table. Terrace (if applicable):
- swept, furniture cleaned and stored. If you rented linens, please put them in the bag at the entrance of the accommodation.

**The campsite reserves the right to retain all or part of the deposit in case the cleaning is not done.**

If you have rented linens, please return them to the provided bag at the entrance of the accommodation.

If you have rented equipment (e.g., barbecue): please drop it off at the reception.



# Our Commitments to the Environment



Your campsite is committed to an eco-friendly  
approach. We kindly thank you for  
accompanying us...





# Sort your waste

Selective sorting is mandatory.

Each accommodation is equipped with a recycling bin to assist you.



Your packaging goes in the **yellow bin**.

Throw loosely (without a bag): packaging, plastic, paper, cardboard, cans, tins, aerosols, trays.



Your non-recyclable waste goes in the **burgundy bin**.

Throw, in a closed garbage bag: sanitary products, cotton pads, diapers, protective items, special papers...



Your glass goes in the **green container**.

The green container is located 50 meters to your right at the campsite exit.



Your food waste goes in the **small "food waste" bin**.

Dispose of your food packaging, plant waste, paper towels, coffee grounds... to be emptied into the bin at the campsite entrance.



THE WASTE BINS ARE LOCATED AT THE ENTRANCE OF THE CAMPSITE. YOU WILL FIND PICTOGRAMS TO HELP YOU WITH SORTING.



# *Adopt eco-responsible actions.*

**Turn off the radiator and/or air conditioning.**



If your window or door is open, remember to close them. Excessive electricity consumption will result in a deduction from the security deposit.

**Do not let the water run unnecessarily.**



Avoid excessive time in the shower. In case of water or gas leaks, electrical issues, or pollution on the premises, please inform the management.

**Turn off or unplug your electrical appliances.**



To prevent any risk of fire, carefully monitor your electrical connections.

**Respect the condition of your toilets.**



Only use toilet paper in the toilets. The mobile homes are equipped with macerators, so disposing of wipes, tampons, or towels can damage this equipment.

THANK YOU FOR STRICTLY ADHERING TO THESE INSTRUCTIONS.

# Respect the local wildlife.

---

Our campsite is now certified as an LPO Refuge (League for the Protection of Birds). It's a commitment to the environment that surrounds us, as well as all the living species that inhabit it.



## **Through this charter, our campsite commits to:**

- to cease hedge trimming from March 15th (except for exceptional circumstances)
- to prohibit the use of pesticides to allow the land to lay fallow for bird nesting
- to promote carpooling and bike rental to encourage alternative transportation methods to cars
- to favor short food supply chains through various partnerships, especially with a nearby organic vegetable grower
- to use natural or eco-certified cleaning products, such as laundry detergent, in cleaning kits
- to showcase local artisans and producers at the weekly summer market
- to plant various plant species necessary for the preservation of local flora
- to preserve water on the campsite by controlling watering cycles and collecting rainwater
- to limit evening lighting to avoid disturbing animals



# WIFI

The Wi-Fi zone is confined to the area around the bar/snack and the reception.

## **Username**

**Camping\_Seigneurie\_invite**

---

## **Pass word**

Seigneurie90110



# Bar-Snack

*licence 4*

**Our bar opens its doors every year from May to September.**

---

Off-season: weekends and public holidays

(see posted hours on site)

July and August: open every day (except Wednesday)

from 4:00 PM to 10:00 PM

## Breakfast (sweet or savory depending on offer)

(by reservation the day before by 6:00 PM)

Off-season: weekends and public holidays

from 8:30 AM to 10:00 AM

July and August: every day

served on the terrace



## Lunch/Dinner

On-site or take-away

Off-season: weekends and public holidays

Season: every day (except Wednesday)

From 4:00 PM for ice cream, soft drinks,  
aperitifs, cocktails...

and from 6:30 PM for dinner





# Bakery

Enjoy our baguettes and pastries  
(croissants and pain au chocolat).



Off-season: weekends and public holidays  
(from May onwards)

And every day from June 15th to September 15th.



Et tous les jours du 15 juin au  
15 septembre.

The hours may vary depending on demand.

# Entertainment and outings

To visit the region and  
discover

**Belfort Tourism**  
(on the Franche-Comté side)



**Masevaux Tourist Office**  
(on the Alsace side)



## Local Markets

- **Masevaux** Wednesday morning (local producers) and every 2nd Thursday of the month from 5:00 PM (farmers' market)
- **Etueffont** Local market, 1st Sunday of the month
- **Delle** Saturday morning, city center market
- **Belfort** Fréry Market, Thursday and Friday, from 7:00 AM to 12:00 PM, and Saturday and Sunday from 7:00 AM to 1:00 PM
- **Giromagny** Saturday mornings
- **Thann** Saturday mornings

The campsite also offers a fitness area, 2 play areas for children, a bowling alley, a ping pong table, darts board games, a Children's Club (6-12) open every summer and various activities and family. Discover the summer entertainment schedule on the Flowercamping app

## To know more...

Find our ideas for outings and activities at the campsite reception, on our Facebook as well as on the "Flowercamping" application.



# *Other outing suggestions*



## **COLMAR**

(52-minute drive via the D83)



## **The Alsace Wine Route**

(55-minute drive via the D83)



## **The Lion of Belfort and its citadel**

(1-hour drive via the D83)



## **The Mulhouse Automobile Museum**

(46-minute drive via the D83)



## **Europapark**

(56 min de route par la D20)

# *In case of Emergency*

---

## EMERGENCY NUMBERS:

Campsite management (outside reception opening hours):

**(+33)3 84 23 00 13 /**

**06 76 65 50 65 OR 07 89 08 03 43**



## DOCTORS

Doller Medical Office (5 km), 1 avenue Gérard: **03 89 82 80 00**

On-call doctor: **116 117**

## PHARMACIES in Masevaux

Banon Pharmacy: **03 89 82 40 65**

Dirr Pharmacy: **03 89 82 45 19**



# *Have a good Stay!*

Follow us on Facebook and Instagram to  
relive the memories of your stay.

